

## Design Features

Alumilite designs reliable products produced with the best available materials, and we stand behind them with superior customer service. Please contact us for more information.

**Shaft:** 4" diameter extruded aluminum tube with (.226) wall and 5" diameter with (.156) wall is welded to the cast aluminum base. Available with smooth or fluted extrusion.

**Decorative Base:** Cast aluminum base is provided with a 4" by 4" hand hole. Flush mounted cover is secured with one stainless steel tamper resistant screws. Base height is available from 24" to 48".

**Anchor Base:** The anchor base is cast from A356 alloy aluminum and shall be heat tempered to a T6 temper. The shaft and base are joined by a continuous circumferential weld at the outside top and inside bottom of the base.

**Anchor Bolts:** Each pole is supplied with four 3/4" by 15" long zinc-plated steel anchor bolts with two nuts, flat washers and template.

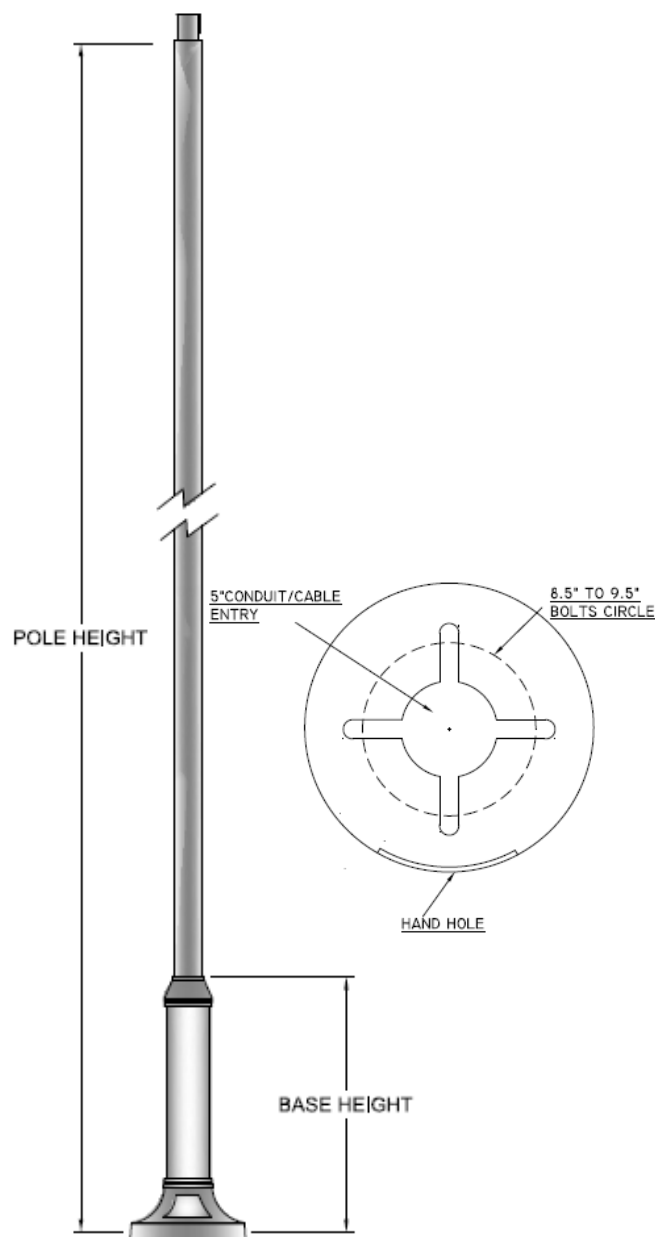
**Finish:** Standard finish is a baked on polyester powder. Color to be specified.

**Packaging:** Plastic sleeve shall cover each shaft prior to being inserted into a heavy gauge cardboard tube.

**Caution:** Poles should never be erected without luminaire installed. Grout must be installed between anchor base and concrete pad or the warranty will be voided.

### EPA in Square Feet at:

Pole Height	80MPH	90MPH	100MPH
10 Feet	15.1	12.3	9.4
12 Feet	13.1	9.7	8.1
14 Feet	10.1	8.2	6.0
16 Feet	8.7	6.8	4.3
18 Feet	6.5	5.4	3.1



Base Design	Pole Height	Base Height	Shaft	Options	Finish
DP6	10'	24"	SM = Smooth	GFI = Ground Fault Receptacle	BZ = Bronze
DP6	12'	30"	FL = Fluted		BK = Black
DP6	14'	36"	4" = 4" Shaft		WH = White
DP6	16'	42"	5" = 5shaft		SL = Silver
DP6	18'	48"			CC = Custom Color