

Design Features

Alumilite designs reliable products produced with the best available materials, and we stand behind them with superior customer service. Please contact us for more information.

Shaft: The shaft shall be 3", 4", or 5" in diameter and extruded from seamless 6063 alloy aluminum. Poles can be side drilled or provided with a welded tenon for mounting luminaires.

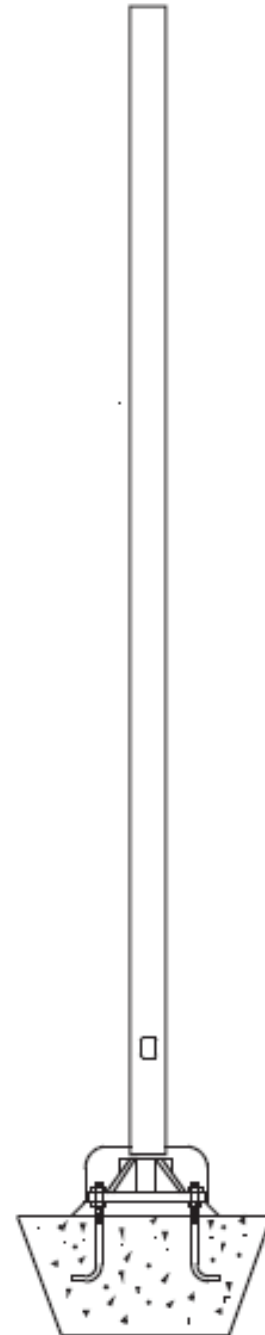
Anchor Base: The anchor base is cast from A356 alloy aluminum and shall be heat tempered to a T6 temper. The shaft and base are joined by a continuous circumferential weld at the outside top and inside bottom of the base.

Anchor Bolts: Each pole is supplied with 3/4" by 15" long zinc-plated steel anchor bolts with two nuts, flat washers and template.

Finish: Standard finish is a baked on polyester powder. Color to be specified.

Packaging: Plastic sleeve shall cover each shaft prior to being inserted into a heavy gauge cardboard tube.

5Sgf[a` , Ba M6eZag`V` VVVdTWdWUFW i [fZagf g_ [S[dV
[efS^Wz9dgf_ gef TW[efS^W TWfi VVV S` UZadTSeWS V
Ua` UdWVbSV adfZWM SctS` fk i [^TWha[VVz



Anchor Base and Bolt Detail

Pole Diameter	Bolt Circle	Bolt Projection	Bolt Quantity and Size	Outside Diameter	Height
3"	6"	3 1/4"	(3) 3/4 x 16"	8"	5 1/2"
4"	7"	3 1/4"	(4) 3/4 x 16"	9 1/4"	5 1/2"
5"	7 1/2"	3 1/4"	(4) 3/4 x 16"	9 1/4"	5 1/2"

Specification Guide

Part Number	Height	Diameter	Wall	Effective Projected Area in Square Feet at:		
				80MPH	90MPH	100MPH
RSA-8-3-5	8FT	3"	.125	5.7	4.2	3.2
RSA-10-3-5	10FT	3"	.125	4.0	2.8	2.0
RSA-10-4-5	10FT	4"	.125	8.1	6.0	4.6
RSA-10-4-0	10FT	4"	.226	15.1	12.3	9.4
RSA-12-4-5	12FT	4"	.125	5.7	4.1	3.0
RSA-12-4-0	12FT	4"	.226	13.1	9.7	8.1
RSA-12-5-5	12FT	5"	.125	10.2	8.0	6.2
RSA-12-5-8	12FT	5"	.188	16.1	12.5	10.0
RSA-14-4-5	14FT	4"	.125	4.1	2.7	1.0
RSA-14-4-0	14FT	4"	.226	10.1	8.2	6.0
RSA-14-5-5	14FT	5"	.125	7.8	6.0	4.6
RSA-14-5-8	14FT	5"	.188	12.7	9.8	7.8
RSA-16-4-5	16FT	4"	.125	2.8	1.6	1.0
RSA-16-4-0	16FT	4"	.226	8.7	6.8	4.3
RSA-16-5-5	16FT	5"	.125	5.9	4.4	3.4
RSA-16-5-8	16FT	5"	.188	9.9	7.6	5.9

E.P.A. calculations allow for 1.3 Gust Factor

Options

TT2.3 = 2 3/8" OD Tenon

TT3 = 3" OD Tenon

TT3.5 = 3 1/2" OD Tenon

DR = Duplex Receptical

GFI = Ground Fault Interruption

Finish

BZ = Bronze

BK = Black

WH = White

SL = Silver

CC = Custom Color