

Features and Characteristics

Alumilite designs reliable products produced with the best available materials, and we stand behind them with superior customer service. Please contact us for more information.

Housing: Four heavy gauge .188 wall extruded aluminum sections interlock to form the cylinder housing. Two sections are internally welded to the cast lens frame and two sections are welded to cast cap and mounts directly to J-Box or ceiling with a universal bracket.

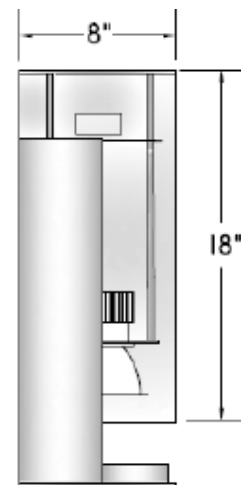
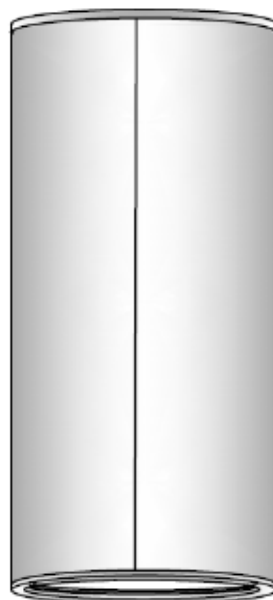
Lens Assembly: Clear heat tempered glass lens is sealed in regressed cast aluminum frame. The lower frame is welded to two extruded sections which easily slides down for maintenance by removing one flush stainless steel screw. A safety chain secures the frame in place.

Optical System: Spun aluminum reflector with semi-specular finish produces a smooth symmetrical distribution.

Module/Driver: Cree LED modules are incased in a cast aluminum housing and sealed with diffused lens. They provide industry-leading efficacy of 97 lm/W for 20w/2000 and 30w/3000lm and 108 lm/W for 40w/4000lm. Modules are available in 3000, 3500 and 4000k and have a minimum CRI of 90. Drivers are 0-10v dimming with universal voltage. Extruded aluminum heat sinking system provides optimal thermal management. Optional with emergency driver for 2000, 3000 and 4000lm models "EMB".

Finish: Polyester powder coating on all metal parts. Color to be specified.

Listing: Luminaire is ETL listed for wet locations.



20" with EMD

Specifications

Series	Wattage/Lamp	Volts
YRC	20w/LED = 820/LED	UV
YRC	30w/LED = 830/LED	UV
YRC	40w/LED = 840/LED	UV

Options	Finish
3000k = 30k	BZ = Bronze
3500k = 35k	BK = Black
4000k = 40k	WH = White
PG = Prismatic Glass	SL = Silver
OB = Open Bottom	CC = Custom Color
EMD = Emergency Driver	

Example

40 Watt, LED, 120 Volts, 3000k, Bronze
YRC-840/LED-UV/30k/BZ