

Design Features

Housing: The heavy duty spun aluminum shroud with three aluminum disks are provided with dome top cap. The shroud, disk and cap assembly are built as one unit for ease in installation.

Dome Cap: The rugged hydroformed aluminum cap with a hemispherical shape rests on the top disk. Cap is threaded to accept the pendant and sealed to prevent water entry when used outdoors.

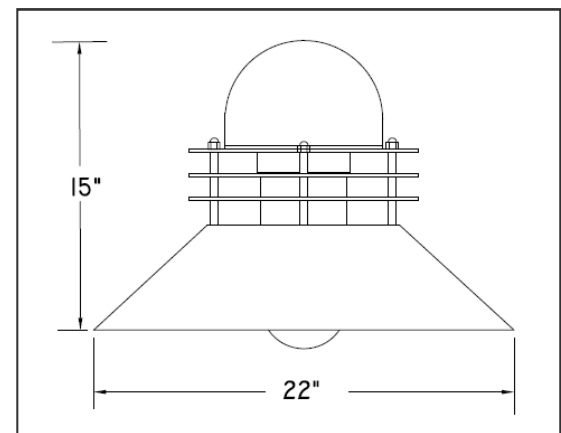
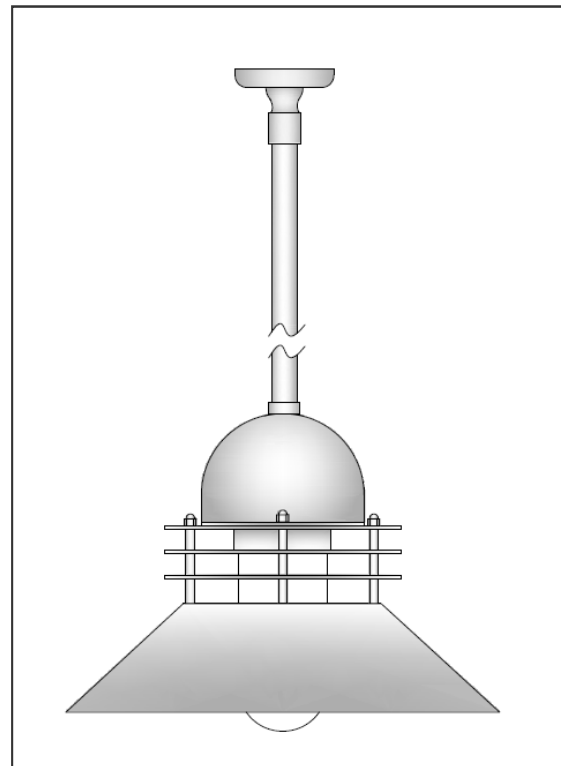
Enclosure: A clear glass enclosure with threaded neck is provided as standard. Optional units can be ordered with inside sandblasted or with vertical prismatic ribs. The enclosure is secured to a threaded cast aluminum fitter which is mounted in the dome.

Pendant Assembly: Extruded aluminum pendant is threaded for secure fit to dome cap. Pendant is provided with swivel canopy and universal mounting bracket for bolting to J-Box. Pendant length must be specified when ordering.

Ballast/Lamp Assembly: HID ballast shall be high power factor and suitable for -20° F operation. CFL ballast are electronic uni-volt and operate a 26, 32 or 42 watt lamp. HID sockets are porcelain, medium base and pulse-rated. CFL sockets are thermoplastic.

Finish: Polyester powder coating on all metal parts. Color to be specified.

Listing: Luminaire is ETL listed for wet locations.



Specification Guide

Series	Wattage/Lamp	Volts	Options	Finish
VK-9	26-42w/CFL = 42P	120	1F = Single Fuse	BZ = Bronze
	70w/HPS = 07S	208	2F = Double Fuse	BK = Black
	100w/HPS = 10S	240	FG = Frosted Glass	WH = White
	150w/HPS = 15S	277	PG = Prismatic Glass	SL = Silver
	70w/MH = 07H	480	WM = Wall Mount	CC = Custom Color
	100w/MH = 10H	UV	PM = Pole Mount	
	150w/MH = 15H		CG = Cast Guard	

Example: 100 Watt, Metal Halide, 120 Volts, Single Fuse, Bronze
VK-910H-120/1F/BZ