

YRD 800 Series



Design Features

Housing: Four heavy gauge .188 wall extruded aluminum sections interlock to form the cylinder housing. Two sections are internally welded to the cast lens frame and two sections which are bolted to mounting bracket have the dome top welded to it.

Dome Cap: Heavy gauge .125 wall hydroformed hemispherical cap is welded to the housing.

Lens Assembly: Clear heat tempered glass lens is sealed in regressed cast aluminum frame. The frame is welded to two extruded sections which easily slides down for relamping and ballast maintenance by releasing a single set screw. A safety chain secures the frame in place. Incandescent cylinders for Par lamps are supplied with an open bottom "OB".

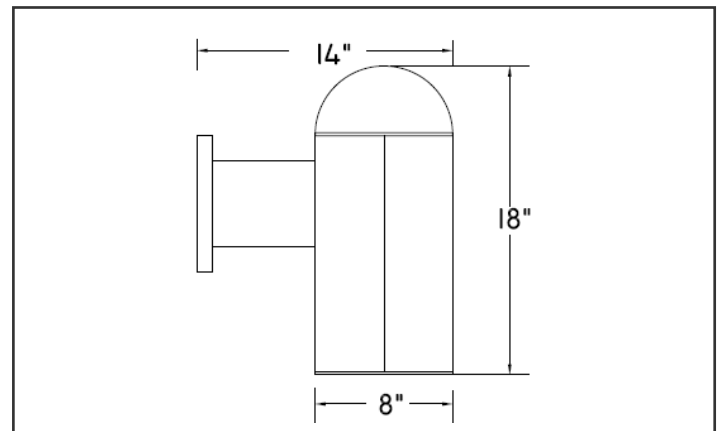
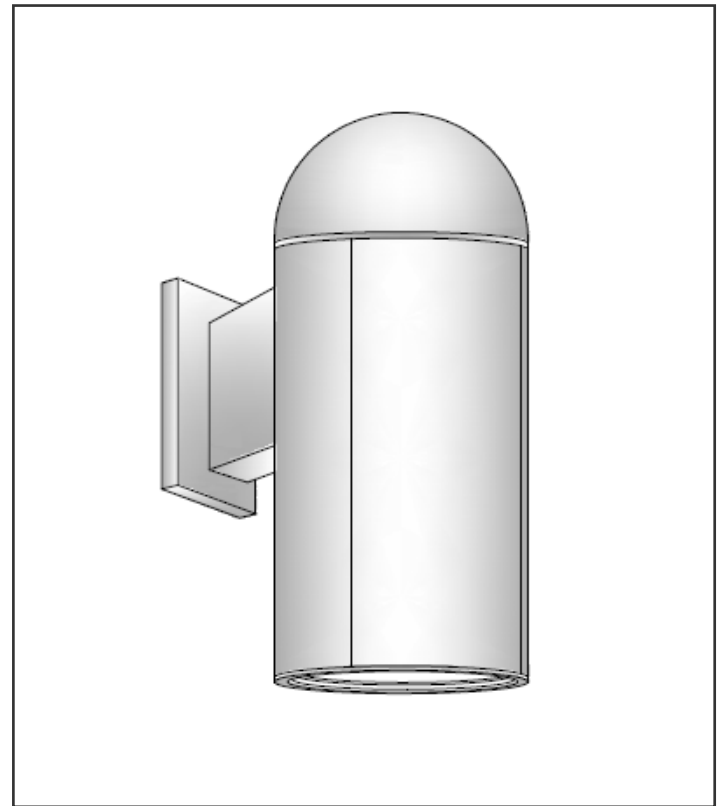
Optical System: Spun aluminum reflector with specular low iridescent finish produces a smooth symmetrical distribution. Incandescent Par lamps do not require reflectors.

Mounting Bracket: Extruded aluminum arm is internally welded to the cast back plate. Arm is bolted to housing with two 3/8" bolts. Steel zinc plated bracket mounts to wall surface and is attached to the cast plate with two stainless steel fasteners.

Ballast/Lamp Assembly: HID ballast are high power factor and suitable for -20° F operation. CFL ballast are electronic uni-volt and operate a 26, 32 or 42 watt 4-pin lamp. HID and INC sockets are pulse-rated medium base and CFL are thermoplastic.

Finish: Polyester powder coating on all metal parts. Color to be specified.

Listing: Luminaire is ETL listed for wet locations.



Specification Guide

Series	Wattage/Lamp	Volts	Options	Finish
YRD	26-42w/CFL = 842P	120	1F = Single Fuse	BZ = Bronze
	70w/HPS = 807S	208	2F = Double Fuse	BK = Black
	100w/HPS = 810S	240	PH = Button Cell	WH = White
	150w/HPS = 815S	277	QR = Quartz Relay	SL = Silver
	70w/MH = 807H	UV	PG = Prismatic Glass	CC = Custom Color
	100w/MH = 810H		OB = Open Bottom	
	150w/MH = 815H		EMB = Emergency Ballast	
	150w/INC = 815I/Par38			

Example: 100 Watt, Metal Halide, 120 Volts, Single Fuse, Bronze
YRD-810H-120/1F/BZ